



# SYST'AM® P951D / BACK SUPPORT & THERAPEUTIC COMBI-PACKS

BACK SUPPORT MADE OF VISCOELASTIC FOAM WITH MEMORY EFFECT AND MULTI-BEARING SURFACE

## MATERIALS

80  
kg/m<sup>3</sup>



Visco foam



Removable  
POLYMAILLE®  
cover

### Foam maintenance:



(Do not immerse in water)

### Cleaning of the cover:



## INDICATIONS

P951D / Back support and Therapeutic Combi-Packs can be used to:

- 1- Improve positioning in wheelchair.
- 2- Reduce forward sliding.



### UNIVERSAL ATTACHMENT SYSTEM

→ Enables adaptation of the back support to most wheelchair models

## AVAILABLE VERSIONS



**P951D / Back Support**  
With POLYMAILLE® Cover.

Available at:



[www.mortonperry.co.nz](http://www.mortonperry.co.nz)

DESIGNATION	SIZE	ITEM CODE	SIZES W x L x H (cm x inches)
P951D / Back support Small with POLYMAILLE® Cover	Small	XD951DS1HW	44 x 39 x 9 cm / 17 x 15 x 3,5"
	Standard	XD951D1HW	49 x 44 x 9 cm / 19 x 17 x 3,5"
	Large	XD951D1LHW	49 x 50 x 10 cm / 19 x 20 x 4"





**SYST'AM® BACK SUPPORT IS WITH THE CUSHION  
FOR THE PREVENTION OF PRESSURE SORE:  
A VERY COMPLEMENTARY SYSTEM**

- Provides significant relief from the spinal pressure points.
- Reduces the risk of sores forming in the sacrum area due to the reduction in sagittal instability (forward slipping).
- Reduces shear effects on the sacrum/buttock area thanks to the better pelvic support.

**AN ANATOMIC FORM**

- Respects the morphology of the back resulting from syphosis.
- Respects the Anatomy of the low lumbar, an important aspect of posture.

**IMPROVED COMFORT  
OF THE PATIENT IN WHEELCHAIR**

- Side padding to protect the axillary-dorsal zone from contact with the frame of the chair, often painful for wheelchair users.

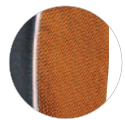
**COVER**



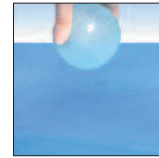
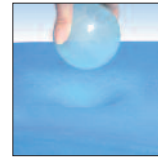
- In the dorsal area, two-way stretch fabric coated with polyurethane that breathes and is totally waterproof.



- Stretch, coated fabric resists abrasion and constraints of intensive daily use.



- Highly resistant technical fabric positioned in areas subject to greater abrasion.



**PERFORMANCE OF THE MULTIBEARING CONCEPT**

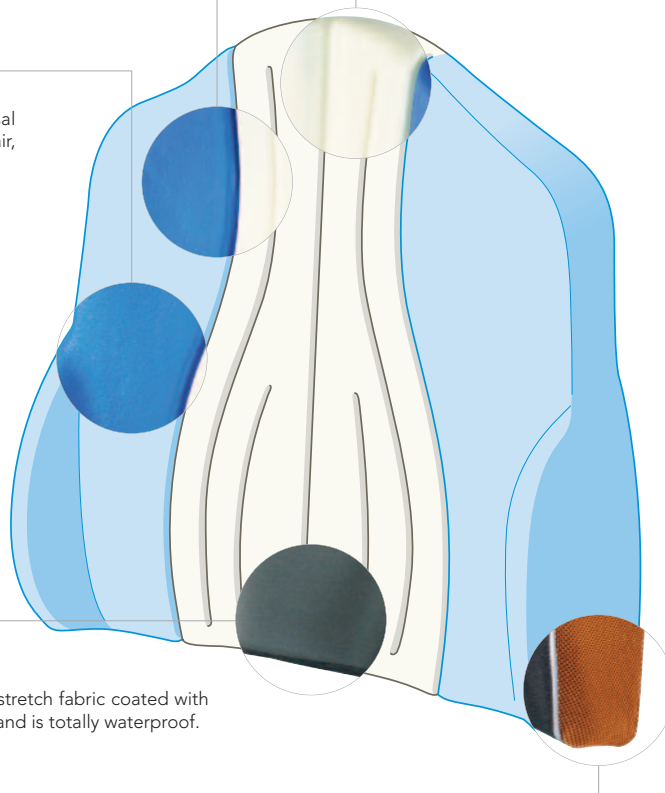
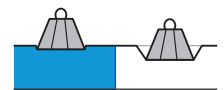
- The multibearing surface enables a better pressures distribution through the transfer of pressures from areas with low bearing capacity toward areas with high bearing capacity:

**WHITE AREAS:**

Areas with low bearing capacity (gentle support) frees vertebral zone from pressure peaks and favors proper dorsal fit.

**BLUE AREAS:**

Areas with high bearing capacity (firmer support) transfers pressure from high-risk areas and accentuates lateral stability.

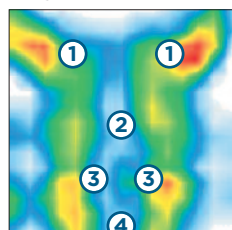


**IMPROVEMENT OF THE POSITIONING  
AND THE STABILITY OF THE PATIENT**

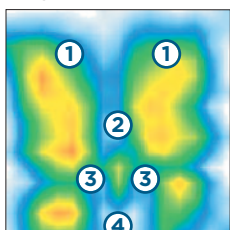
- By stabilising the pelvic area it contributes to preventing the sliding and risks of falling. This is a permanent issue for elderly at home and in nursing homes;
- The sides "pads" reduce the lateral instability, which is frequent by handicapped.



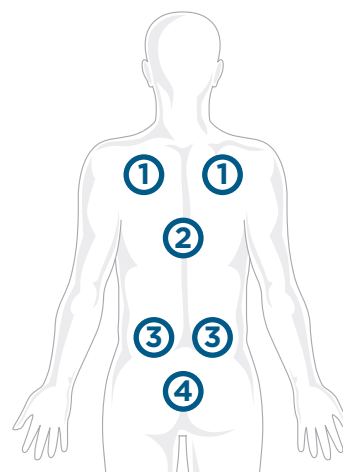
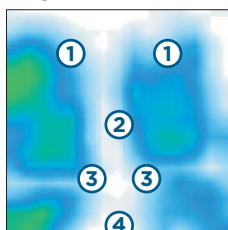
WITHOUT BACK  
SUPPORT  
CUSHION



WITH REGULAR  
FOAM BACK  
SUPPORT



WITH SYST'AM®  
BACK SUPPORT  
CUSHION



- ① SHOULDER BLADES / SHOULDERS
- ② VERTEBRAL ZONE
- ③ LUMBAR ZONE
- ④ SACRUM ZONE