

Dahl Docking Station Mk II

Revolutionary Docking System will set new standards for flexibility and safety!



Art. no.: 501750 - Dahl Docking Station

Dahl Engineering's newly developed electric Docking System provides a hitherto unseen flexibility and safety for wheelchair users.

The Docking System is the first system on the market to be tested and TÜV certified in accordance with EU safety requirements for cars (M1). In testing, the docking station has proved to be so strong that it can withstand a load corresponding to a wheelchair weight of more than 200 kg + passenger provided that the safety belt is installed in the traditional manner in the floor of the vehicle.



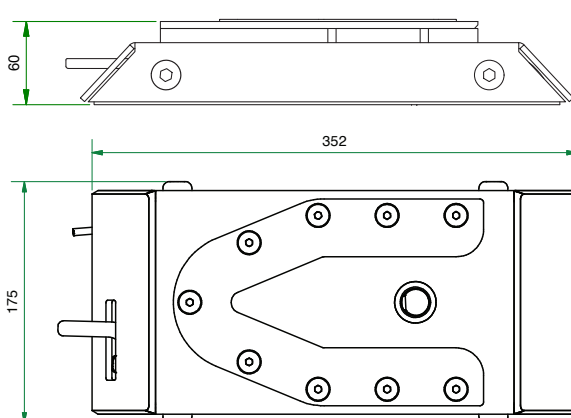
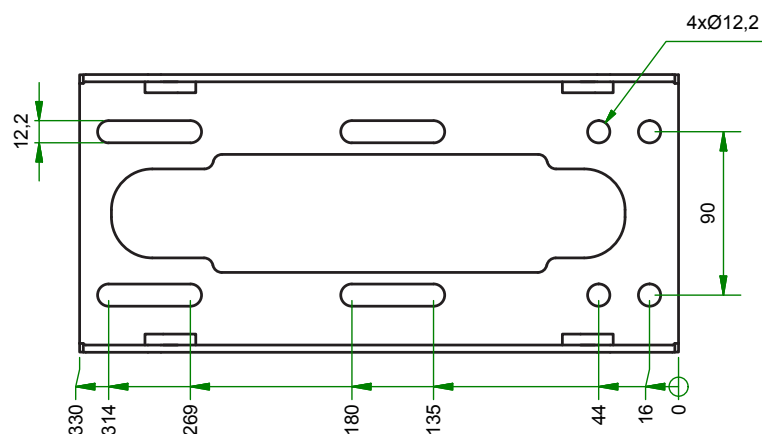
Art. no. 501750

Contents of a standard set.

With the lap belt mounted on the wheelchair, the various special safety belts that are used to secure the wheelchair user to the floor become redundant. This results in an uncluttered floor with plenty of space to manoeuvre the wheelchair into the docking station.



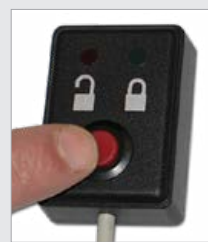
You can find more information about maintenance and installation of the Dahl Docking Station on our website: <https://dahleengineering.dk/en/products/dahl-docking-station/installation-and-maintenance/>



Easy to operate



The wheelchair is released by pressing the red button on the control panel.



Mounting the lap belt on the wheelchair, thus avoiding the need to install it in the floor (which is the most common solution), provides hitherto unseen flexibility.

If a wheelchair has an integrated lap belt, the user only has to be able to pull the shoulder belt down to the lap belt and secure it once the wheelchair is locked into the docking station.

We would be happy to work with the wheelchair manufacturer in question on the development of

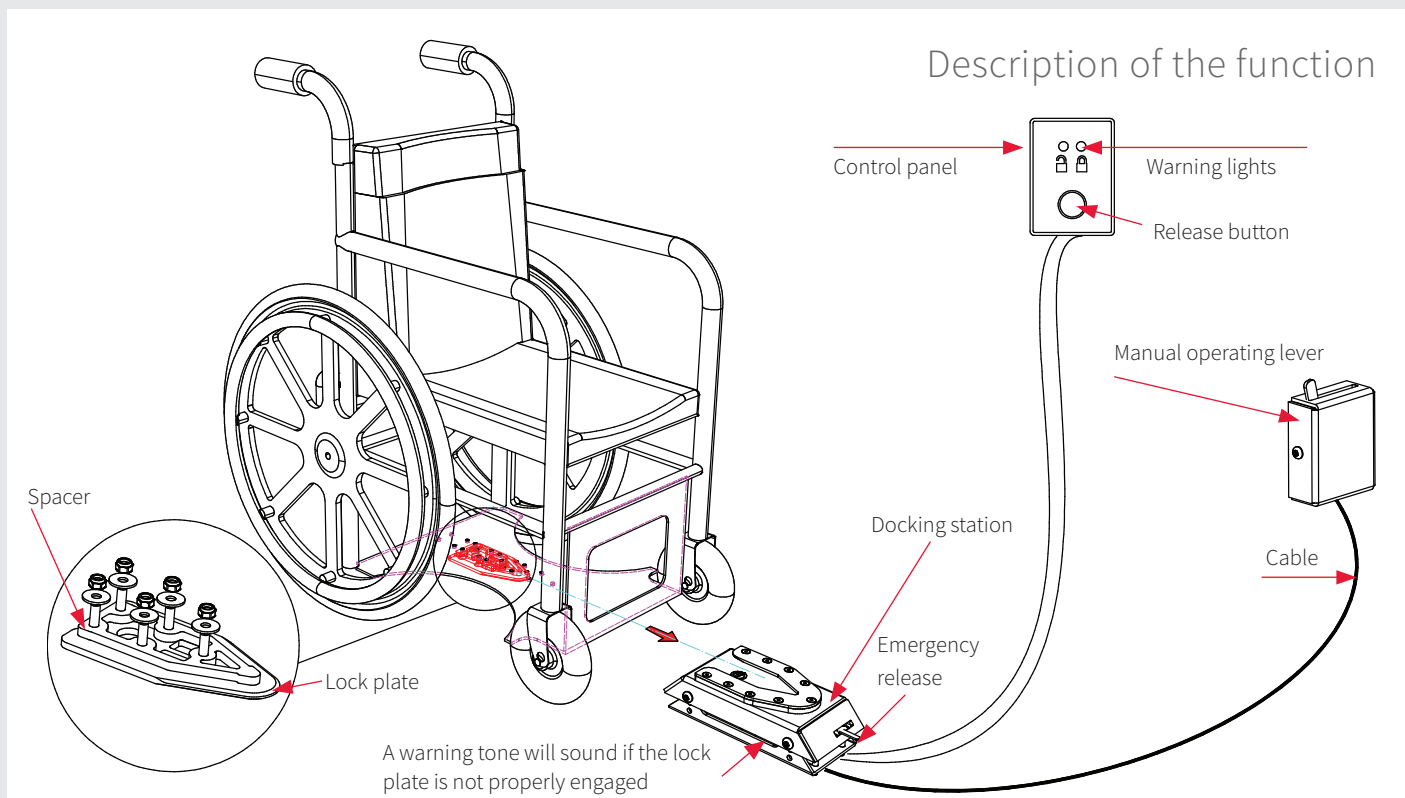
a solution, should your wheelchair not be among the certified models.

For wheelchairs that are not certified with integrated safety belts, we have a wide range of ISO certified safety belts for installation in the traditional manner in the floor of the vehicle.

Please refer to our full range of safety belts for wheelchair users.



A lock plate and a spacer must be fitted under the wheelchair. When the wheelchair is maneuvered towards the docking station, it is guided into place by means of the lock plate and is secured automatically.



Accessories for Dahl Docking System

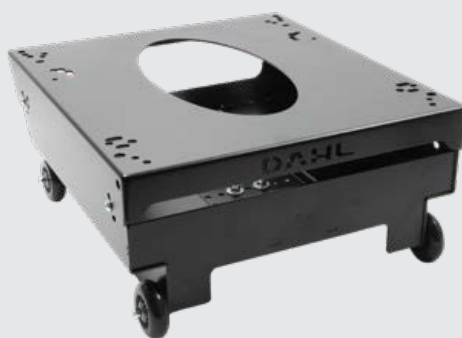


Seat base frame for the docking station

Art. no. 503245
Height 134-202 mm

Art. no. 500650
Height 180-222 mm

Art. no. 502270
Height 237-279 mm



Easy to swap seats

A newly developed seat base frame means that the docking station can be used for either wheelchairs or car seats depending on what is required. It is easy to install the vehicle's original seat on the base frame, and it is easy to remove if the driver and passenger need to swap seats.

The base frame is equipped with holes for the installation of seats such as an original driver's seat in Nissan NV 400, Opel Movano, Renault Master, VW T5, MB Sprinter, VW Crafter, MB Vito/Viano and Dahl Sport.

Our seat base frames have been tested in accordance with ECE regulation 14 and 17.

The seat base frame can be assembled in 36 different positions for optimum flexibility and comfort, thus allowing the seat height and angle to be adjusted.



Manual operating lever

Art. no. 500680



Cable for manual operating lever

Art. no. 502418



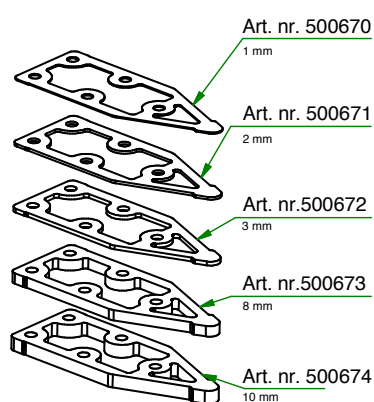
Emergency release tool

Art. no. 503161

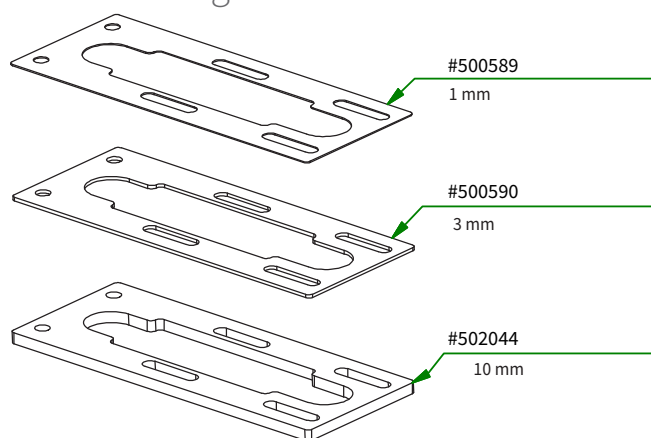


Accessories for Dahl Docking System

Spacers for height adjustment of the lock plate



Spacers for height adjustment of the Docking Station



Subframes for Docking Station Mk II



Vehicle list - tested Dahl Docking fitting kits

Vehicle and model	Seat-row	with standard floor	with lowered floor
Citroën Berlingo with Tripod *	1		503461
Citroën Jumper Y	2	502171	
	2	502172	
	3	502179	
	3	502180	
Citroën Jumpy X	2	502171	
	2	502172	
	3	502177	
	3	502178	
Citroën Jumpy & Spacetourer KO	1	503303	
	1	503304	
	1	503305	
	1	503306	
	2	503301	
	2	503302	
Fiat Doblo High roof SWB & LWB	3	503120	
	3	503121	
Fiat Ducato X250	2	502171	
	2	502172	
	3	502179	
	3	502180	
Fiat Scudo X270	2	502171	
	2	502172	
	3	502177	
	3	502178	
Fiat Talento	2	502171	
	2	502172	
Ford Transit Custom V362	2	502171	
	2	502172	
	3	502177	
	3	502178	
Ford Transit Custom V363	2	502194	
GM Coachwork VW T5 & T6 Colorado*	1		502285
	1		502286
	1		502287
	1		502288
MAN TGE 2017-	2	503142	
	2	503143	
	3	503144	
	3	503145	
	3	502171	
	3	502172	
Mercedes Vito 639 & V-Class W447	2	502171	
	2	502172	
Mercedes Vito & V-Class 447	1	502163	
	1	502164	
	1	502165	
	1	502166	
	1	502167	
	1	502168	
	2	502171	
	2	502172	
	3	502177	
	3	502178	
Mercedes Sprinter 906 & 907	1	501970	
	1	501971	
	1	502034	
	1	502035	
	2,3	502175	
	2,3	502176	
	3	502171	
	3	502172	
Nissan NV200	2	503197	
Nissan NV300	2,3	502171	
	2	502172	
Nissan NV400	1	502039	
	1	502041	
	1	502042	
	1	502043	
	2	502181	
	2	502182	
Nissan Primastar	2	502171	
	2	502172	
Opel Combo High roof SWB & LWB	3	503120	
	3	503121	

Vehicle and model	Seat-row	with standard floor	with lowered floor
Opel Movano X62	1	502039	
	1	502041	
	1	502042	
	1	502043	
	2	502181	
	2	502182	
Opel Vivaro X82 & X83	2,3	502171	
	2	502172	
Peugeot Boxer Y	2	502171	
	2	502172	
	3	502179	
	3	502180	
Peugeot Expert X	2	502171	
	2	502172	
	3	502177	
	3	502178	
Peugeot Expert & Traveller KO	1	5033003	
	1	503304	
	1	503305	
	1	503306	
	2	503301	
	2	503302	
Peugeot Impulse / Allied *			503461
Peugeot Partner Tepee / Tripod *	1		503461
Renault Master X62	1	502039	
	1	502041	
	1	502042	
	1	502043	
	2	502181	
	2	502182	
Renault Trafic X82&X83	2,3	502171	
	2	502172	
Toyota Proace	2	502171	
	2	502172	
	3	502177	
	3	502178	
Toyota Proace & Proace Verso 2017-	1	5033003	
	1	503304	
	1	503305	
	1	503306	
	2	503301	
	2	503302	
VW Caddy ITEK*	1		503255
	1		503310
VW Crafter (2006-2016)	1	501970	
	1	501971	
	1	502034	
	1	502035	
	2,3	502175	
	2,3	502176	
	3	502171	
	3	502172	
VW Crafter 2017-	2	503142	
	2	503143	
	3	503144	
	3	503145	
	3	502171	
	3	502172	
VW T5 & T6	1	501973	
	1	502036	
	1	502037	
	1	502040	
	2	502171	
	2	502172	
	3	502173	
	3	502174	
	3	502177	
	3	502178	
Zawatzky Centervan VW T6 *	1		502368
	1		502369

* Drop floor conversion