



SYST'AM® FRANCE

ANATOMIC MOULDED CUSHION MADE OF HIGH RESILIENCE FOAM

MATERIALS

40
kg/m³



HR foam



Removable
POLYMAILLE®
cover



NF EN ISO 597 - 1 & 2

Cleaning of foam:



(Do not immerse in water)

Cleaning of the cover:



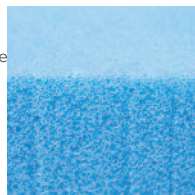
INDICATIONS

Risk



Systam France HR-foam-Cushion can be used, when:

- Seated position is necessary resulting from diseases or handicap and there is at the same time an increased risk of pressure sore.

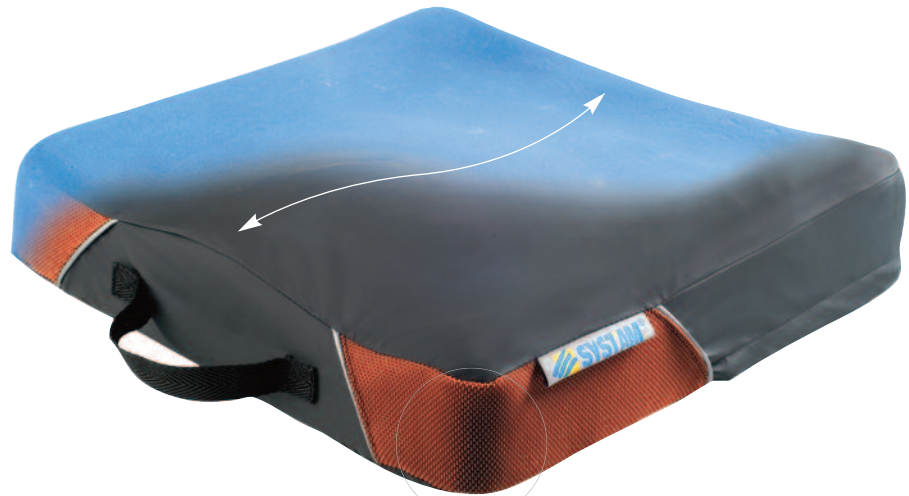


MADE OF POLYURETHAN HR-FOAM

→ The high bearing capacity of the SYST'AM® high resiliency foam (HR foam) with high density (40 kg/m³) confers an excellent resistance against sagging effect.

SKIN EFFECT OF THE MOULDING PROCESS

→ True barriere, which protects the product.



BREATHABLE COVER (IMPERMEABLE TO LIQUIDS)

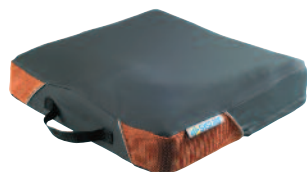
- Adapted for incontinence;
- Reduces the maceration effects

AN ANTI-SLIP BASE

- Avoiding any sliding of the cushion from the support.

ANATOMICAL SHAPE WITH RAISED LATERAL EDGES AND FRONT-BACK SLOPE

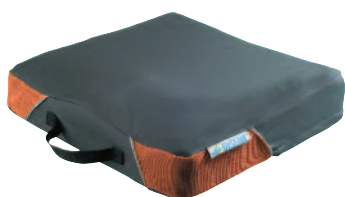
- Improves the positioning, the stability and the comfort of the patient;
- Increases the contact surface and therewith reduces the pressures



SYST'AM® France
With POLYMAILLE® cover.



COVER FRANCE



POLYMAILLE®

- Coating of polyurethane on Jersey polyester
- Integral cover over 6 sides
- Non-slip base
- Adapted for home care and medical institutions use
- Hypoallergenic
- Anti-bacterial, anti-germ, anti-fungal
- bi-extensible
- Hyper-breathable (liquid repellent material and permeable to steam), adapted for incontinence. Reduce maceration effects through easing the skin respiration.
- Zip on 3 sides (except P311C)
- Integrated handle



POLYMAILLE®

Composition	Coating of Polyurethane on Jersey polyester
Version	Integral cover
MATERIAL CHARACTERISTICS	
Anti-allergenic	✓
Antibacterial	✓
Antimicrobial	✓
Antifungal	✓
Bi-extensibility	+
Respirability	+++
Fabric FEATURES (cushions only)	
Kind of assembly	Sewing
Anti-slip basis	✓
Opening	3 sides (Except P311C: lower face)
Integrated handle	✓
Serigraphy	
MAINTENANCE & DISINFECTION	
Wash	
Disinfection	Disinfect using cold-application spray products (Quaternary ammonium - glutaraldehyde...)