


# Orbit 160

A perfect fit everytime



Basic Set-up & Accessories



Model	<b>Orbit 160</b>
Drive Configuration	MWD
Product Code	XME1618
<b>SAFETY Compliant - to ISO7176-19, NZ LVVTA</b>	
Crash test passed 	Yes
<b>FUNCTION</b> *Standard specification, no up-	
Seat tilt, electric	50° *
Seat lift, electric	30cm/12" Optional
Floor to seatpan minimum	43cm/17"
Floor to seatpan maximum	51cm/20"
Back recline, manual or	30° *
Back recline, electric	50° Optional
Backrest, fold-down	Yes *
Legrest centre, manual	Yes *
Legrest swing-away, manual	Optional *
Legrest elevating, manual	Optional
<b>PERFORMANCE</b>	
Turning radius	40cm/16"
Chair width	64cm/25"
Chair length without footrests	93cm/36.5"
Range max.	35-40km
Speed max.	10km/h
Client weight max.	160Kg
<b>SPECIFICATIONS</b>	
Motor type	4 Pole
Battery size	50Ah x 2
Battery charger Amp	8Amp
Electronics, Penny & Giles	VR2
Drive wheel size	35cm/14"
Castor front/rear size	20cm/8"
Powerchair weight	140Kg
<b>ADJUSTABILITY</b>	
Seat width	38-60cm/15-23.5"
Backrest width	38-60cm/15-23.5"
Seat depth	40-60cm/16-23.5"

## Orbit 160 Spare parts



Meyra Orbit - Rear Steering Wheel 6 x 1 ¼  
(for centre mount wheel)  
**XME206131300**



Meyra Orbit - Tilt Sensor (includes Magnet)  
**XME1088602**



Meyra Orbit - Castor/Steering wheel 8"  
**XME1083543**



Meyra Orbit - Wheelfork rear wheel  
bracket FW 60 for Code 690  
**XME1082108**



Meyra Orbit - Wheelfork rear  
wheel bracket FW 72  
**XME1082106**



Meyra Orbit - Steering fork  
**XME1082104**



Meyra Orbit/Sky - Splash/Wheel Guard 14" (pair)  
**XME1070520**



Meyra - Drive Right 350W, 4300U/min I=28.7/1 AMT  
**XME1081767**  
Meyra - Drive Left 350W, 4300U/min I=28.7/1 AMT  
**XME1081766**

# Orbit 160 Spare parts



Meyra Orbit - Rear swing arm assbl with central wheel suspension (5wheel configuration)  
**XME5006825**



Meyra Orbit/Sky Double point Support Castors - Frame with rear rocker arm + 2 laterally suspended castors  
**XME690**



Meyra Orbit - Puncture Safe wheel Left 14" **XME1083488**  
Meyra Orbit - Puncture Safe wheel Right 14" **XME1083489**



Meyra Orbit - Drive Wheel Left 14" **XME1083485**  
Meyra Orbit - Drive Wheel Right 14" **XME1083486**



Meyra Orbit - 12VF50 Valen FORTE 12V50Ah Battery  
**XVP12VF50**

## Orbit 160 Back Cane Setup

The Meyra Orbit has width adjustable back canes and there are three versions of this:

- Version #1 : 38cm and 43cm
- Version #2: 43cm, 48cm and 53cm
- Version #3: 55-60cm (Orbit 160 XL Kit)

Seat width can also be widened by spacing out the armrests.

**Very Important:** Please add XME690 double point support castors when chair backcanes are set at 53/55/60cm widths.

## Orbit 160 XL Kit (Bariatric)



Meyra Orbit - 55-60cm Seat Width Ext.  
Kit (XL)

code: XMEXLKIT(VAR)

# Orbit 160 Controllers

Attendant can control all chair functions; drive, seating functions etc.



VR2 Attendant Control Dual  
code: XME107791

A Kill switch to stop all functions in case of emergency



Emergency Stop  
code: XMEKS



Meyra Orbit VR2  
JSM Module with lights  
code: XME5006757

Ideal for sitting at tables or driving a vehicle



Orbit swing away control module bracket  
LH code: XME60ORB  
RH code: XME74ORB

# Orbit 160 Joystick Knobs



M48 Mushroom  
code: XTA95154



Ball 38mm  
code: XTA95155



Cone  
code: XTA95298



Softball SB70  
code: XTA95300



T-Bar  
code: XTA95301



Stick S80  
code: XTA95305



Chin C38  
code: XTA95306



Golf ball  
code: XTA80653



Standard ball  
code: XTA95153

Most custom knobs used for car gearsticks can be applied on the JSM controllers by our technician, please ask!



Joystick - Handle 4" U Flex shift  
code: XABPPC102B

# Orbit 160 Legrests & Footplates



Elevating centre leg rest

Length 28-40cm code: XME5100

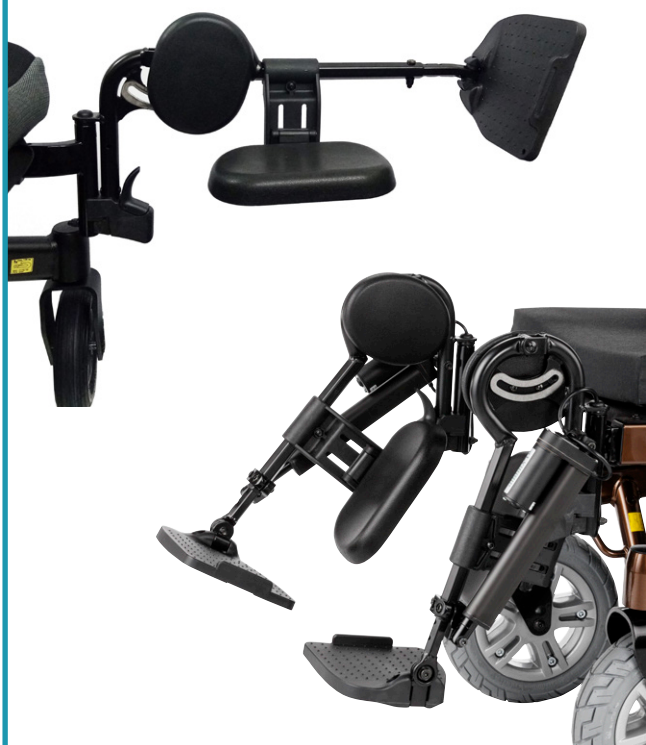
Length 33-45cm code: XME5101



Swing away single leg rests

Pair code: XME93

Left code: XME93L Right code: XME93R



Elevating single leg rest with calf support

Pair code: XME92

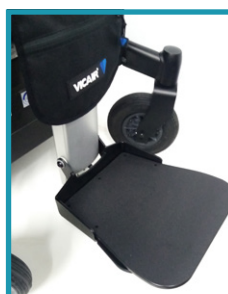
Left code: XME92L Right code: XME92R



Leg Amputee supports

Pair code: XME52

Left code: XME52L Right code: XME52R



Meyra Orbit - Standard Footplate  
Extension Long (27cm)  
code: XMEFOOTEXT-FF



# Orbit 160 Armrests

## Flip up Armrest

Ideal for easy transfers



Flips the armrests up

Armrest bracket set - flip up without stays (excl armrest cushions)  
code: XTA80302



Keeps the armrest upright

Stop for armrest brackets + flip-up  
code: XTA80743



Ideal for sitting at tables or driving a vehicle

TA Joystick - Swing away bracket for **Flip-up armrest**

RH code: XTA80407

LH code: XTA80408



Meyra - Arm support pad standard L=380mm  
XME1070451



Gel Ovarions Arm pad 3.5x14"  
code: XAGO314G

## Gutter Armrest Cushions

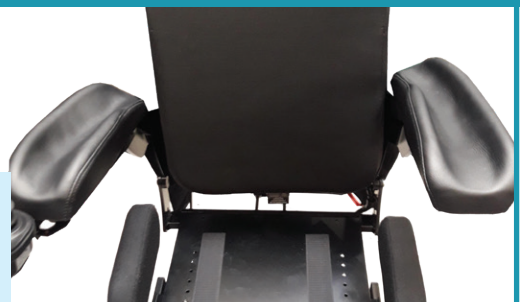
The gutter shaped armrests are ideal for users that require extra support of the forearms.



Armrest - Hemi cushion LH long  
Gutter width: 7cm. Length: 40cm  
code: XTA20247



Armrest - Hemi cushion RH short  
Gutter width: 7cm. Length: 34cm  
code: XTA20244



Armrest Cushion Short  
LH Short code: XTA80336 RH Short code: XTA80320



Armrest Cushion Long  
LH Short code: XTA80321 RH Short code: XTA80335

# Orbit 160 Head Supports



Orbit Head support asmb with clamp  
dimensions: 26x14cm  
code: XME1069259

These Nxt Headrests can only be fitted with one of the Nxt Backrests.



Nxt Head Support Contoured  
dimensions: 26x14cm  
code: XDNIB0785



Nxt Head Support Large Rectangle  
dimensions: 28x14cm  
code: XDNIB0784



Nxt Head Support XL  
dimensions: 38x14cm  
code: XDNIB0818

# Cup & Device Holders



RAM Drink Holder  
Self-leveling holder keeps your drink upright regardless of the conditions  
code: XRAM-B-132-400U  
XL code: XRAM-B-132-400U-XL



TA USB Charger for charge port (EMS)  
code: XEMSUSB24CO17



RAM Quick-Grip XL Spring Loaded Cradle for Larger Cell Phones  
code: XRAM-HOL-PD4U

Find the right backrest and cushion for your chair

Visit our website and our:

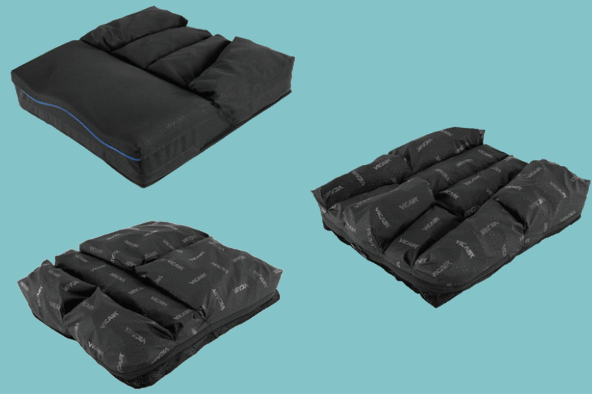
**PRODUCT SELECTION TOOL**

or **COMPARISON CHART**

will guide you to the best fit.



Back Systems



Seating



**Morton & Perry**  
Healthcare Equipment Solutions

For full specifications see our website or  
contact our team for a product demonstration.  
0800 238 523 | [mortonperry.co.nz](http://mortonperry.co.nz)